

043494

RECEIVED
LARAMIE COUNTY
CHEYENNE, WY.

CERTIFIED LAND CORNER RECORDATION

'88 MAY 5 PM 1 30

DESCRIPTION OF CORNER EVIDENCE FOUND, AND ORIGINAL RECORD (If known)
Found standard G.L.O. Monument bent, marked E1/16 S.6 S.7

E1/16 S.6
S.7
T.14N., R.70W.
6th P.M.

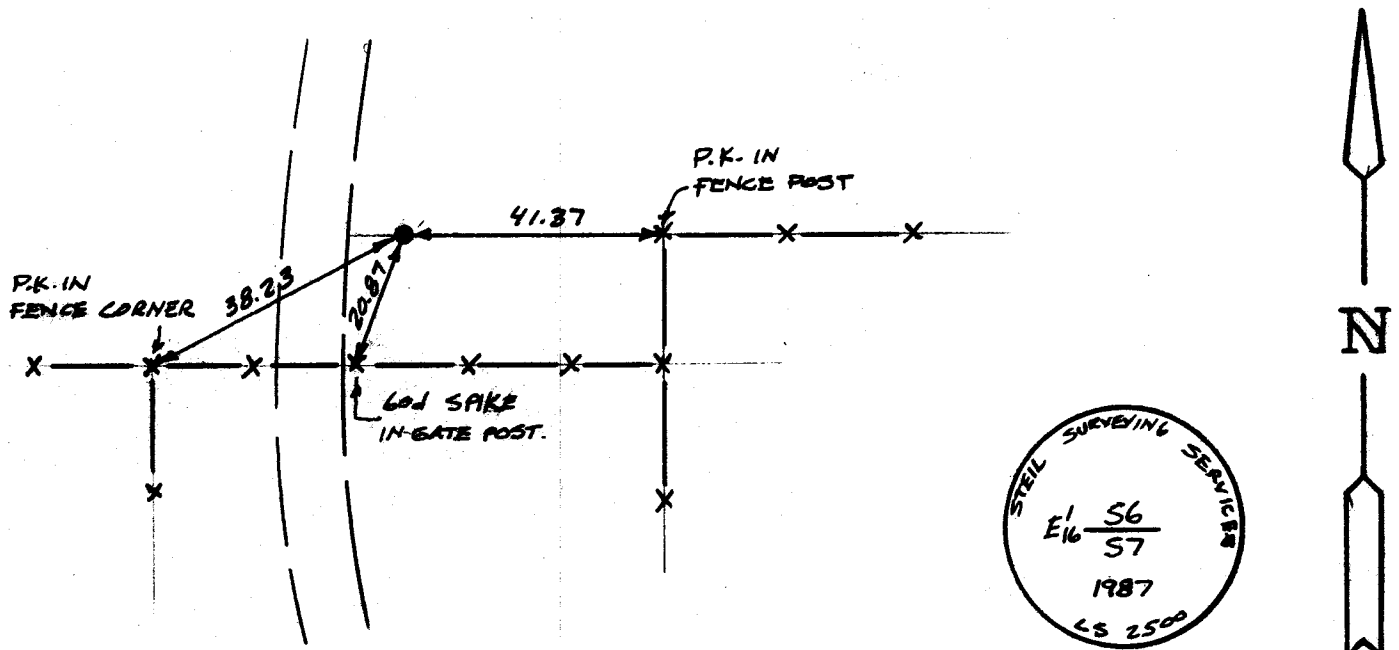
G.L.O. Record - Set a 1" diameter x 3' long iron post with brass cap marked E1/16 S.6 S.7 1934.

DESCRIPTION OF MONUMENT AND ACCESSORIES ESTABLISHED TO PERPETUATE THE ORIGINAL LOCATION OF THIS CORNER:

At the corner: Tried to staighen standard G.L.O. Monument but broke in half. Set 2 1/2" x 30" long aluminum pipe with aluminum cap stamped as shown below, 12.5' East of road, 20' North of fence line projecting 4" above ground.

Accessories : See ties below.

SKETCH, WITH COURSE AND DISTANCE TO ADJACENT CORNER IF DETERMINED IN THIS SURVEY.
(May Sketch or Paste Reproduction on Reverse Side.)



I, John A. Steil certify that I have carefully performed or reviewed the work done on the diagrammed corner as reported on this recordation form and approve the same.

John A. Steil
Signature of Surveyor

L.S. 2500
Registration No.

STATE OF WYOMING,
Office of Clerk and Recorder,
County of Laramie

This "corner record" was filed for record on the 5th day of May, 1988, was noted on the cross-index plat and is assigned page No. 2010, in book No. 1259

Janet C. Whitcomb
County Official

Cross Index No.	E-4	T. 14N	R. 70W	Mer. 6th
		T. _____	R. _____	Mer. _____
		T. _____	R. _____	Mer. _____
		T. _____	R. _____	Mer. _____
		T. _____	R. _____	Mer. _____
		T. _____	R. _____	Mer. _____